



# Utility Clamps

## Small, Medium, Large

(248) 356-2839

### Hinged Clamps in 3 sizes

- **Small** 54 mm
- **Medium** 102 mm
- **Large** 133 mm

## FEATURES

### SMALL CLAMP

- Quick release clasp
- Lightweight aluminum construction
- Anodized for long lasting service
- Use with SHI inserts and RD brackets

### MEDIUM AND LARGE CLAMP

- Quick release clasp with locking hasp
- Lightweight aluminum construction
- Anodized for long lasting service
- Use with UHI, LHI, SA, and SD brackets

## Small Clamp – 54 mm



54 mm ID



Relative Bundle Size (not to scale)



SHC-A00 Stationary



SHC-AS1 Swivel only

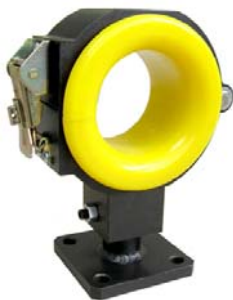


SHC-A0P Post Mount/ Stationary

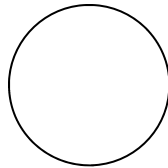


SHC-ASP Post Mount/ Swivel

## Medium Clamp – 102 mm



102 mm ID



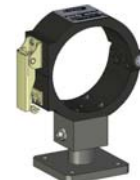
Relative Bundle Size (not to scale)



UHC-A00 Stationary



UHC-AF-SS-F0 Swivel only



UHC-AF-SB-F0-057 Swivel/ Stationary

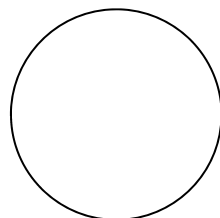


UHC-AF-DB-F0-057 Dual Swivel/ Stationary

## Large Clamp – 133mm



133 mm ID



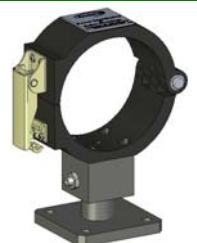
Relative Bundle Size (not to scale)



LHC-A00 Stationary



LHC-AF-SS-F0 Swivel only



LHC-AF-SB-F0-057 Swivel/ Stationary

Notice: The information contained herein is, to the best of our knowledge, true, accurate and reliable. Since procedures and conditions under which these products may be used are beyond our control, no warranty, expressed or implied, is made to their performance.



Syndevco Inc.  
ISO 9001:2008  
Certificate #  
10002227 QM08

## Syndevco Inc.

24205 Telegraph Rd - Southfield MI 48033  
Toll Free: (800) 356-2839 Local: (248) 356-2839 Fax: (248) 356-0928  
visit us at: [www.syndevco.com](http://www.syndevco.com)

Sheet: 141114



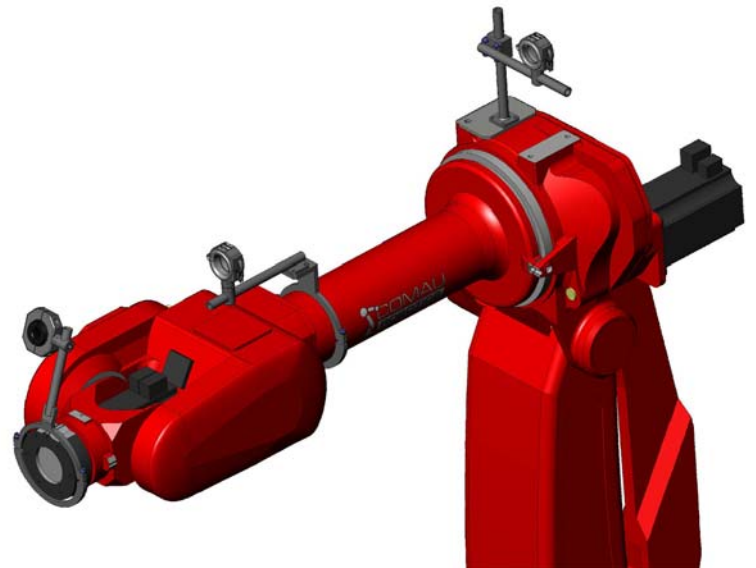
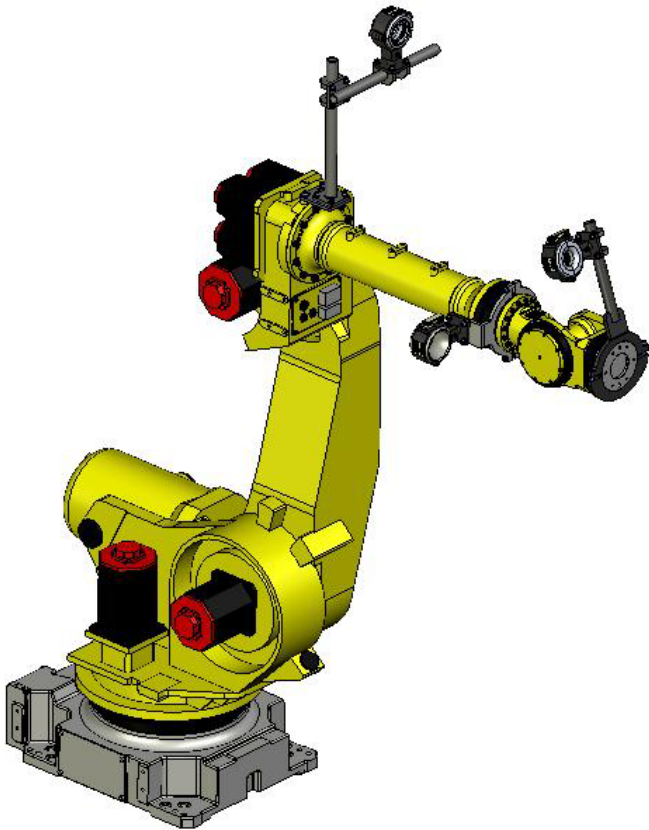
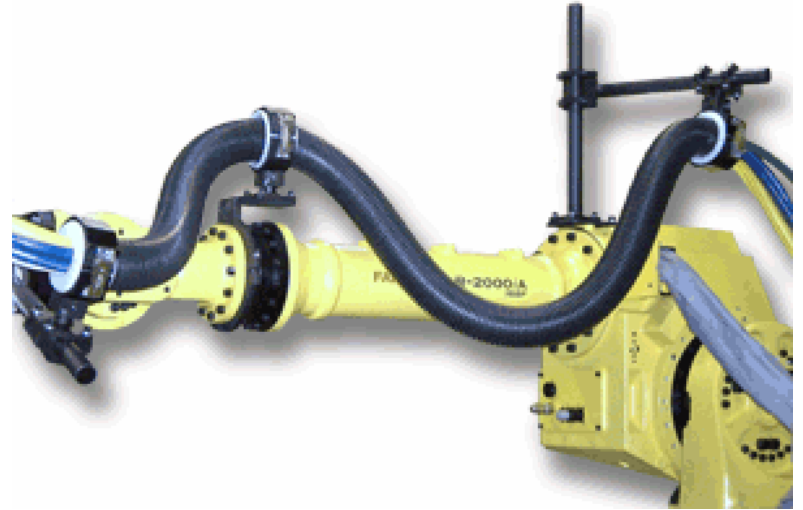
# Utility Clamps Small, Medium, Large

## USAGE EXAMPLES

**Fixtures** – fence posts, rails, tooling, etc.



**Robots** - multiple configurations of clamps allow for proper application.



Notice: The information contained herein is, to the best of our knowledge, true, accurate and reliable. Since procedures and conditions under which these products may be used are beyond our control, no warranty, expressed or implied, is made to their performance.



Syndevco Inc.  
ISO 9001:2008  
Certificate #  
10002227 QM08

**Syndevco Inc.**

24205 Telegraph Rd - Southfield MI 48033

Toll Free: (800) 356-2839 Local: (248) 356-2839 Fax: (248) 356-0928

visit us at: [www.syndevco.com](http://www.syndevco.com)