



Clamp Inserts Plastic– Firm

(248) 356-2839

Inserts used in conjunction with SH, UH, and LH Series Clamps, are available in variety of configurations

FEATURES

- Use with Utility Clamps– **Small**, **Medium** and **Large**
- Color– White
- 2 pc Firm material design
- Many Configurations available
- Custom requirements easily met
- Robot Dress assistance readily available
- ‘Value added’ services available



SINGLE & DUAL HOLE CONFIGURATIONS



Single Hole Insert



Dual Hole Insert

Small Inserts

Single Hole

xx = diameter in mm every 1mm

SHI-Axx

Example:
SHI-A25

Dual Hole

xx = diameter in mm every 1mm
yy = diameter in mm every 1mm

- Small hole first

SHI-Axx/yy

Example:
SHI-A08/20

Medium Inserts

Single Hole

xx = diameter in mm every 2mm

UHI-Axx

Example:
UHI-A48

Dual Hole

xx = diameter in mm every 1mm
yy = diameter in mm every 1mm

- Small hole first

UHI-Axx/yy

Example:
UHI-A34/36

Large Inserts

Single Hole

xx = diameter in mm every 2mm

LHI-Axx

Example:
LHI-A48

Dual Hole

xx = diameter in mm every 1mm
yy = diameter in mm every 1mm

- Small hole first

LHI-Axx/yy

Example:
LHI-A34/60

Notice: The information contained herein is, to the best of our knowledge, true, accurate and reliable. Since procedures and conditions under which these products may be used are beyond our control, no warranty, expressed or implied, is made to their performance.



Syndevco Inc.
ISO 9001:2008
Certificate #
10002227 QM08

Syndevco Inc.

Sheet: 141114

24205 Telegraph Rd - Southfield MI 48033

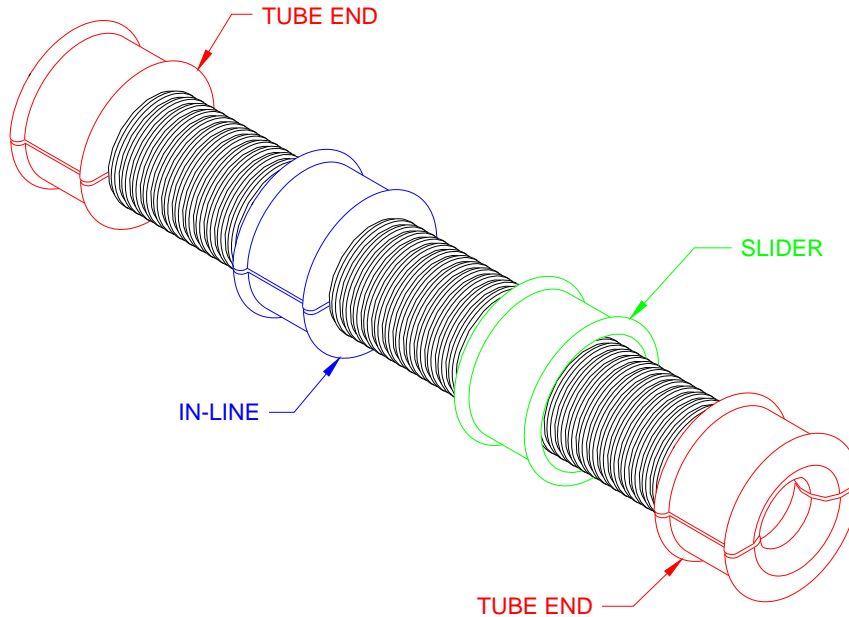
Toll Free: (800) 356-2839 Local: (248) 356-2839 Fax: (248) 356-0928

visit us at: www.syndevco.com



Clamp Inserts Plastic- Firm

CORRUGATED TUBE CONFIGURATIONS



Small Inserts

Corrugated Tube Sizes Available

- 36 mm
- 29 mm
- 23 mm
- Smaller sizes available

End Inserts

SHI- AC (tube size)- ID mm

Example:

- SHI-AC36-29
- SHI-AC29-20
- SHI-AC23-10

In-line Inserts

- SHI-AI36
- SHI-AI29
- SHI-AI23

Slider Inserts

- SHI-AS36
- SHI-AS29
- SHI-AS23

Medium Inserts

Corrugated Tube Sizes Available

- 70 mm
- 56 mm
- 48 mm
- Smaller sizes available

End Inserts

UHI- AC (tube size)- ID mm

Example:

- UHI-AC70-50
- UHI-AC56-48
- UHI-AC48-28

In-line Inserts

- UHI-AI70
- UHI-AI56
- UHI-AI48

Slider Inserts

- UHI-AS70
- UHI-AS56
- UHI-AS48

Large Inserts

Corrugated Tube Sizes Available

- 95 mm
- Smaller sizes available

End Inserts

LHI- AC95- ID mm

Example:

- LHI-AC95-78

In-line Inserts

- LHI-AI95

Slider Inserts

- LHI-AS95

Notice: The information contained herein is, to the best of our knowledge, true, accurate and reliable. Since procedures and conditions under which these products may be used are beyond our control, no warranty, expressed or implied, is made to their performance.



Syndevco Inc.
ISO 9001:2008
Certificate #
10002227 QM08

Syndevco Inc.

24205 Telegraph Rd - Southfield MI 48033

Toll Free: (800) 356-2839 Local: (248) 356-2839 Fax: (248) 356-0928

visit us at: www.syndevco.com