



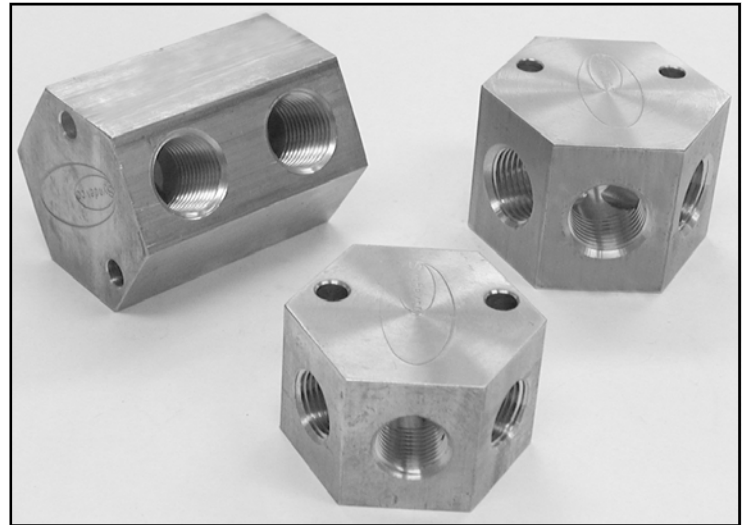
# Wye Series Manifolds

(248) 356-2839

*Brass compact wye manifolds with two or three secondary ports*

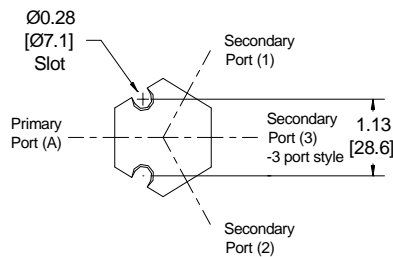
## FEATURES

- Compact size
- Easily mounts with 1/4 or M6 bolts
- Brass construction
- Thread types available
  - NPT—Standard
  - BSPT
  - BSPP (G port)
- Excellent to supply weld tips in parallel
- 1/8 to 1 inch port sizes available
- Two or three secondary ports available
- Dressout assistance readily available

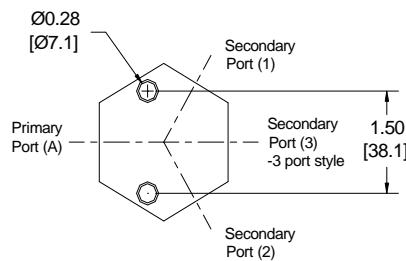


## DIMENSIONS

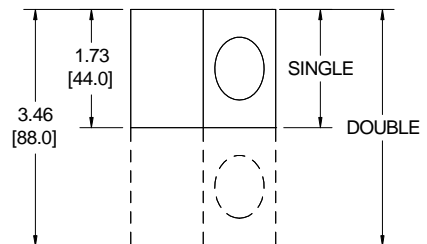
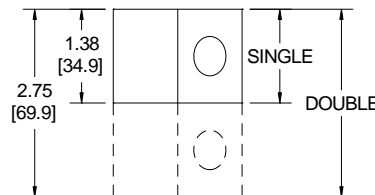
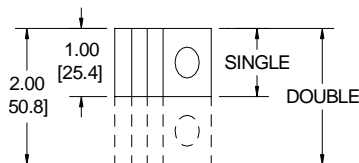
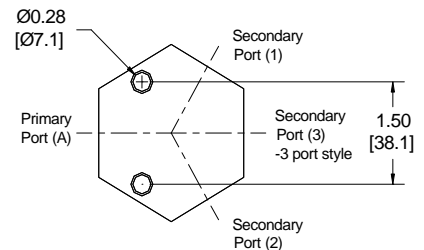
### Size A



### Size B



### Size C



Units of Measure: inches [mm]

Notice: The information contained herein is, to the best of our knowledge, true, accurate and reliable. Since procedures and conditions under which these products may be used are beyond our control, no warranty, expressed or implied, is made to their performance.



Syndevco Inc.  
ISO 9001:2008  
Certificate #  
10002227 QM08

**Syndevco Inc.**

Sheet: 141114

24205 Telegraph Rd - Southfield MI 48033

Toll Free: (800) 356-2839 Local: (248) 356-2839 Fax: (248) 356-0928

visit us at: [www.syndevco.com](http://www.syndevco.com)



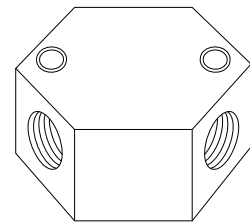
# Wye Series Manifolds

## PART NUMBER SYSTEM - 2 PORT

GENERIC PART NUMBER: AABBB/C-D  
 SAMPLE PART NUMBER: 38382/2

Size	AA Primary Port Size		BBB Secondary Port Size		C Single or Double Stack		D Additional Options	
A	12	1/8 NPT	122	1/8 NPT	None	Single	1	w/ tag holes
A	25	1/4 NPT	122 252	1/8 NPT 1/4 NPT				
A	38	3/8 NPT	122	1/8 NPT	2	Double		
			252	1/4 NPT				
			382	3/8 NPT				
B	50	1/2 NPT	122	1/8 NPT				
			252	1/4 NPT				
			382	3/8 NPT				
			502	1/2 NPT				
B	75	3/4 NPT	122	1/8 NPT				
			252	1/4 NPT				
			382	3/8 NPT				
			502	1/2 NPT				
C	75	3/4 NPT	752	3/4 NPT				

**2 PORT**  
(View of secondary ports)

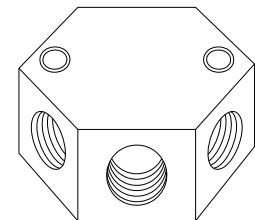


## PART NUMBER SYSTEM - 3 PORT

GENERIC PART NUMBER: AABBB/C-D  
 SAMPLE PART NUMBER: 38383/2

Size	AA Primary Port Size		BBB Secondary Port Size		C Single or Double Stack		D Additional Options	
A	12	1/8 NPT	123	1/8 NPT	None	Single	1	w/ tag holes
A	25	1/4 NPT	123 253	1/8 NPT 1/4 NPT				
A	38	3/8 NPT	123	1/8 NPT	2	Double		Leave blank for none or call a Syndevco Representative
			253	1/4 NPT				
B	38	3/8 NPT	383	3/8 NPT				
B	50	1/2 NPT	123	1/8 NPT				
			253	1/4 NPT				
			383	3/8 NPT				
C	50	1/2 NPT	503	1/2 NPT				
B	75	3/4 NPT	123	1/8 NPT				
			253	1/4 NPT				
			383	3/8 NPT				
C	75	3/4 NPT	503	1/2 NPT				

**3 PORT**  
(View of secondary ports)



Notice: The information contained herein is, to the best of our knowledge, true, accurate and reliable. Since procedures and conditions under which these products may be used are beyond our control, no warranty, expressed or implied, is made to their performance.



**Syndevco Inc.**

24205 Telegraph Rd - Southfield MI 48033

Toll Free: (800) 356-2839 Local: (248) 356-2839 Fax: (248) 356-0928

visit us at: [www.syndevco.com](http://www.syndevco.com)