



Utility Clamps

Small, Medium, Large

(248) 356-2839

Hinged Clamps in 3 sizes

- **Small** 54 mm
- **Medium** 102 mm
- **Large** 133 mm

FEATURES

SMALL CLAMP

- Quick release clasp
- Lightweight aluminum construction
- Anodized for long lasting service
- Use with SHI inserts and RD brackets

MEDIUM AND LARGE CLAMP

- Quick release clasp with locking hasp
- Lightweight aluminum construction
- Anodized for long lasting service
- Use with UHI, LHI, SA, and SD brackets

Small Clamp – 54 mm



54 mm ID



Relative Bundle Size (not to scale)



SHC-A00 Stationary



SHC-AS1 Swivel only

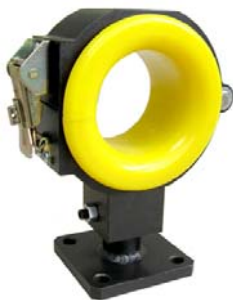


SHC-A0P Post Mount/ Stationary

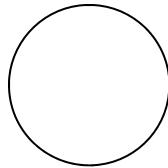


SHC-ASP Post Mount/ Swivel

Medium Clamp – 102 mm



102 mm ID



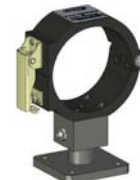
Relative Bundle Size (not to scale)



UHC-A00 Stationary



UHC-AF-SS-F0 Swivel only



UHC-AF-SB-F0-057 Swivel/ Stationary

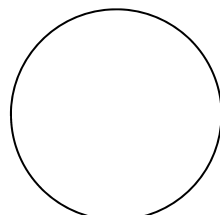


UHC-AF-DB-F0-057 Dual Swivel/ Stationary

Large Clamp – 133mm



133 mm ID



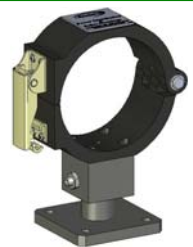
Relative Bundle Size (not to scale)



LHC-A00 Stationary



LHC-AF-SS-F0 Swivel only



LHC-AF-SB-F0-057 Swivel/ Stationary

Notice: The information contained herein is, to the best of our knowledge, true, accurate and reliable. Since procedures and conditions under which these products may be used are beyond our control, no warranty, expressed or implied, is made to their performance.



Syndevco Inc.

24205 Telegraph Rd - Southfield MI 48033
Toll Free: (800) 356-2839 Local: (248) 356-2839 Fax: (248) 356-0928
visit us at: www.syndevco.com

Sheet: 141114

Syndevco Inc.
ISO 9001:2015
Certificate #
10002227 QM15



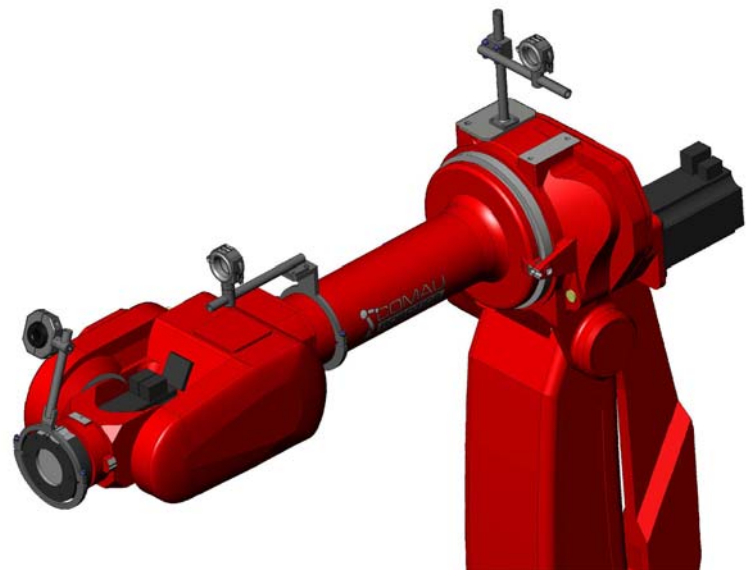
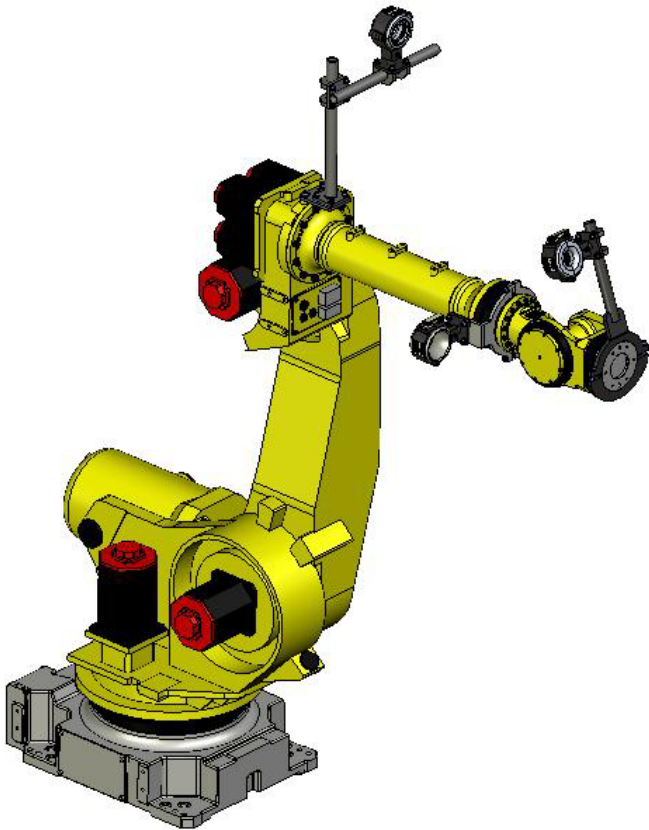
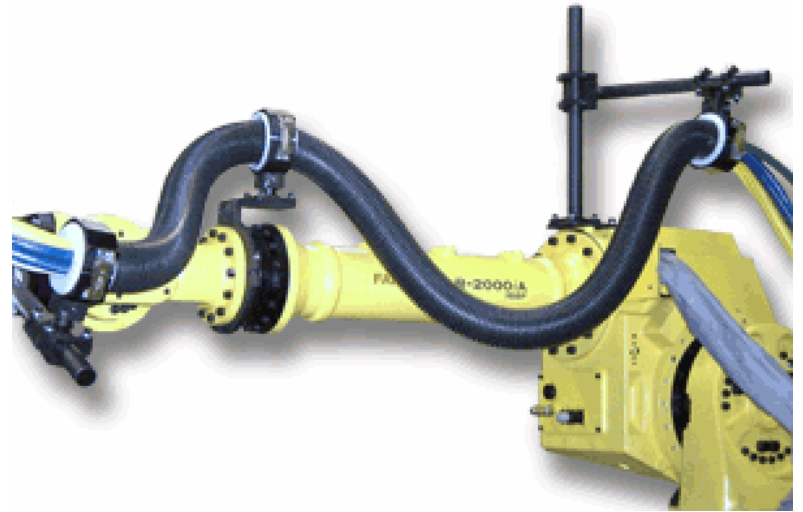
Utility Clamps Small, Medium, Large

USAGE EXAMPLES

Fixtures – fence posts, rails, tooling, etc.



Robots - multiple configurations of clamps allow for proper application.



Notice: The information contained herein is, to the best of our knowledge, true, accurate and reliable. Since procedures and conditions under which these products may be used are beyond our control, no warranty, expressed or implied, is made to their performance.



Syndevco Inc.
ISO 9001:2015
Certificate #
10002227 QM15

Syndevco Inc.

24205 Telegraph Rd - Southfield MI 48033

Toll Free: (800) 356-2839 Local: (248) 356-2839 Fax: (248) 356-0928

visit us at: www.syndevco.com