



# Clamp Inserts Plastic– Firm

(248) 356-2839

*Inserts used in conjunction with SH, UH, and LH Series Clamps, are available in variety of configurations*

## FEATURES

- Use with Utility Clamps– **Small**, **Medium** and **Large**
- Color– White
- 2 pc Firm material design
- Many Configurations available
- Custom requirements easily met
- Robot Dress assistance readily available
- ‘Value added’ services available



## SINGLE & DUAL HOLE CONFIGURATIONS



Single Hole Insert



Dual Hole Insert

### Small Inserts

#### Single Hole

xx = diameter in mm every 1mm

SHI-Axx

Example:  
SHI-A25

#### Dual Hole

xx = diameter in mm every 1mm  
yy = diameter in mm every 1mm

- Small hole first

SHI-Axx/yy

Example:  
SHI-A08/20

### Medium Inserts

#### Single Hole

xx = diameter in mm every 2mm

UHI-Axx

Example:  
UHI-A48

#### Dual Hole

xx = diameter in mm every 1mm  
yy = diameter in mm every 1mm

- Small hole first

UHI-Axx/yy

Example:  
UHI-A34/36

### Large Inserts

#### Single Hole

xx = diameter in mm every 2mm

LHI-Axx

Example:  
LHI-A48

#### Dual Hole

xx = diameter in mm every 1mm  
yy = diameter in mm every 1mm

- Small hole first

LHI-Axx/yy

Example:  
LHI-A34/60

Notice: The information contained herein is, to the best of our knowledge, true, accurate and reliable. Since procedures and conditions under which these products may be used are beyond our control, no warranty, expressed or implied, is made to their performance.



Syndevco Inc.  
ISO 9001:2015  
Certificate #  
10002227 QM15

## Syndevco Inc.

Sheet: 141114

24205 Telegraph Rd - Southfield MI 48033

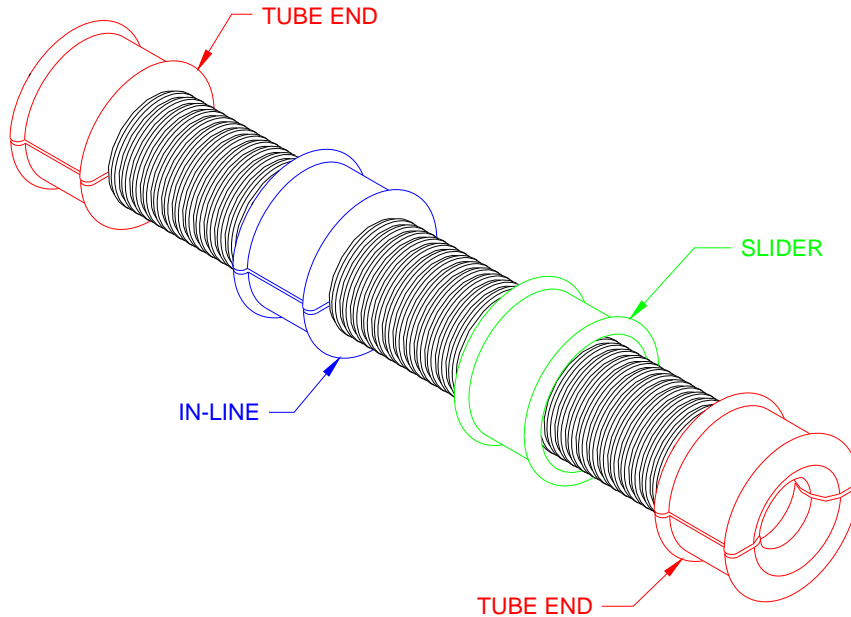
Toll Free: (800) 356-2839 Local: (248) 356-2839 Fax: (248) 356-0928

visit us at: [www.syndevco.com](http://www.syndevco.com)



# Clamp Inserts Plastic- Firm

## CORRUGATED TUBE CONFIGURATIONS



### Small Inserts

Corrugated Tube Sizes Available

- 36 mm
- 29 mm
- 23 mm
- Smaller sizes available

### End Inserts

SHI- AC (tube size)- ID mm

Example:

- SHI-AC36-29
- SHI-AC29-20
- SHI-AC23-10

### In-line Inserts

- SHI-AI36
- SHI-AI29
- SHI-AI23

### Slider Inserts

- SHI-AS36
- SHI-AS29
- SHI-AS23

### Medium Inserts

Corrugated Tube Sizes Available

- 70 mm
- 56 mm
- 48 mm
- Smaller sizes available

### End Inserts

UHI- AC (tube size)- ID mm

Example:

- UHI-AC70-50
- UHI-AC56-48
- UHI-AC48-28

### In-line Inserts

- UHI-AI70
- UHI-AI56
- UHI-AI48

### Slider Inserts

- UHI-AS70
- UHI-AS56
- UHI-AS48

### Large Inserts

Corrugated Tube Sizes Available

- 95 mm
- Smaller sizes available

### End Inserts

LHI- AC95- ID mm

Example:

- LHI-AC95-78

### In-line Inserts

- LHI-AI95

### Slider Inserts

- LHI-AS95

Notice: The information contained herein is, to the best of our knowledge, true, accurate and reliable. Since procedures and conditions under which these products may be used are beyond our control, no warranty, expressed or implied, is made to their performance.



Syndevco Inc.  
ISO 9001:2015  
Certificate #  
10002227 QM15

## Syndevco Inc.

24205 Telegraph Rd - Southfield MI 48033

Toll Free: (800) 356-2839 Local: (248) 356-2839 Fax: (248) 356-0928

visit us at: [www.syndevco.com](http://www.syndevco.com)