



Robot Dress Brackets

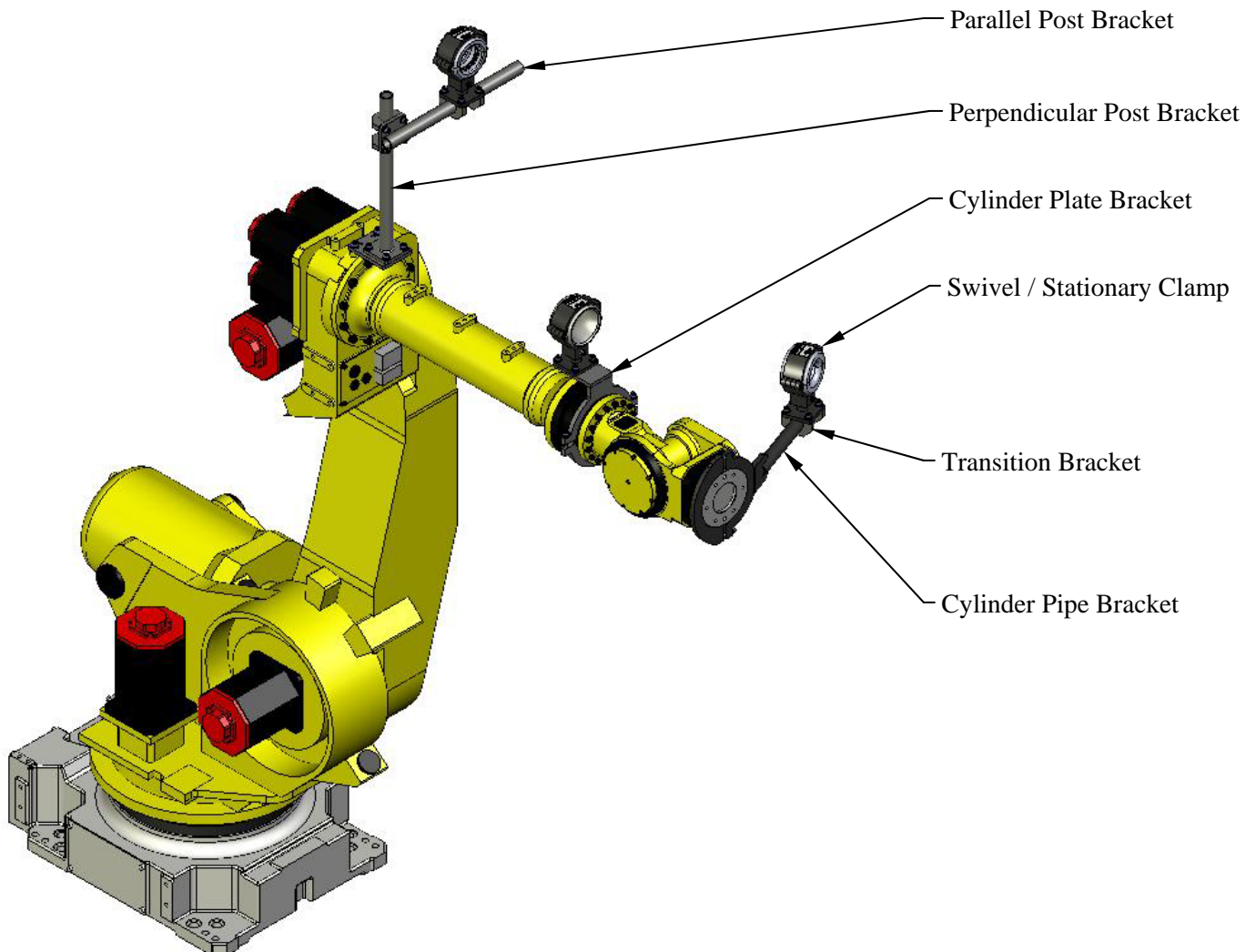
(248) 356-2839

Rigid, light weight brackets to use with utility clamps to route utilities to the EOAT (End Of Arm Tooling)

FEATURES

- Allows flexibility to rearrange utility routings to match application
- Decrease downtime
- Easy to use and reposition
- Secure non-slip mount of cylinder brackets
- Use with SH, UH and LH series utility clamps
- Robot Dress Assistance readily available
- 'Value added' services available

USAGE EXAMPLE



Notice: The information contained herein is, to the best of our knowledge, true, accurate and reliable. Since procedures and conditions under which these products may be used are beyond our control, no warranty, expressed or implied, is made to their performance.



Syndevco Inc.
ISO 9001:2015
Certificate #
1000227 QM15

Syndevco Inc.

Sheet: 141114

24205 Telegraph Rd - Southfield MI 48033

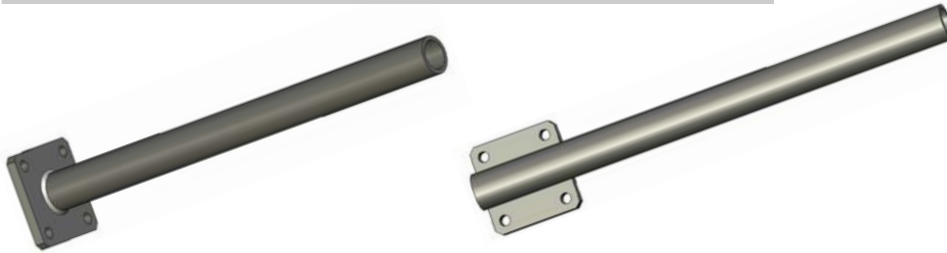
Toll Free: (800) 356-2839 Local: (248) 356-2839 Fax: (248) 356-0928

visit us at: www.syndevco.com



Robot Dress Brackets

Post Brackets



Mounting Hole Pattern

Small	Medium / Large
7mm thru	11mm thru
31.8 mm	60 mm
square c-c	square c-c

Perpendicular

Small
RDA-R1-F0-250

Medium / Large
SAA-R1-F0-460

Parallel

Small
RDA-R1-F1-250

Medium / Large
SAA-R1-F1-460

Cylinder - Pipe Bracket



Thickness

Small	Medium / Large
3/8 in	1/2 in
9.5 mm	12.7 mm

Angled (20 degree)

Small
RDD-R3-(diameter)-250

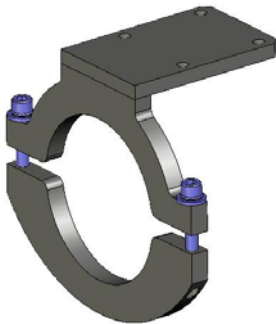
Medium/ Large
SDR3-(diameter)-460

Straight

Small
RDD-R1-(diameter)-250

Medium/ Large
SDR1-(diameter)-460

Cylinder - Plate Bracket



Small
RDD-F1- (diameter) - (Syndevco assigned)

Medium / Large
SDF1- (diameter) - (Syndevco assigned)

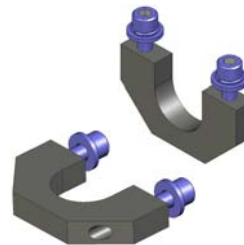
Thickness

Small	Medium / Large
3/8 in	1/2 in
9.5 mm	12.7 mm

Transition Brackets



Small
RDB-A-C



Medium/ Large
SAB-A-C

Typically 2 pcs required per application

Notice: The information contained herein is, to the best of our knowledge, true, accurate and reliable. Since procedures and conditions under which these products may be used are beyond our control, no warranty, expressed or implied, is made to their performance.



Syndevco Inc.
ISO 9001:2015
Certificate #
10002227 QM15

Syndevco Inc.

24205 Telegraph Rd - Southfield MI 48033

Toll Free: (800) 356-2839 Local: (248) 356-2839 Fax: (248) 356-0928

visit us at: www.syndevco.com