



# SM Series Saddle Assembly

(248) 356-2839

*Protect utilities from sharp bends. Eliminate broken wires or kinked hoses*

## FEATURES

- 1/4 saddle for end routings
- 1/3 saddle for good compact protection
- 1/2 saddle for complete protection
- Radii from 3 to 16 inches
- Widths from 2 to 12 inches
- Mounting on top, bottom or along radius
- Eye bolt mounting available
- Swivel/ Stationary mounting available
- Stationary mounting available
- Steel or Aluminum construction
- Strap slots at ends to hold utilities
- Use with SAA or SE series brackets
- Robot Dress assistance readily available
- 'Value added' services available

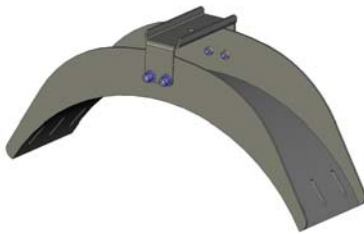
### SM4– 1/4 Saddle



Step 1 Choose Material	Step 2 Choose Radius (inches)	Step 3 Choose Width (inches)	Step 4 Choose Mounting Location	Step 5 Choose Mounting Style
<ul style="list-style-type: none"> <li>• Aluminum</li> <li>• Steel</li> </ul>	<ul style="list-style-type: none"> <li>• 3-16 inches</li> </ul>	<ul style="list-style-type: none"> <li>• 2-12 inches</li> </ul>	<ul style="list-style-type: none"> <li>• along radius</li> </ul>	<ul style="list-style-type: none"> <li>• Swivel/ Stationary</li> <li>• SAA pattern</li> </ul>

See reverse side for more information

### SM3– 1/3 Saddle



Step 1 Choose Material	Step 2 Choose Radius (inches)	Step 3 Choose Width (inches)	Step 4 Choose Mounting Location	Step 5 Choose Mounting Style
<ul style="list-style-type: none"> <li>• Aluminum</li> <li>• Steel</li> </ul>	<ul style="list-style-type: none"> <li>• 3-16 inches</li> </ul>	<ul style="list-style-type: none"> <li>• 2-12 inches</li> </ul>	<ul style="list-style-type: none"> <li>• Top</li> <li>• Bottom</li> </ul> <p>can be switched in field</p>	<ul style="list-style-type: none"> <li>• Eye bolt</li> <li>• Swivel/ Stationary</li> <li>• SAA pattern</li> </ul>

See reverse side for more information

### SM2– 1/2 Saddle



Step 1 Choose Material	Step 2 Choose Radius (inches)	Step 3 Choose Width (inches)	Step 4 Choose Mounting Location	Step 5 Choose Mounting Style
<ul style="list-style-type: none"> <li>• Aluminum</li> <li>• Steel</li> </ul>	<ul style="list-style-type: none"> <li>• 3-16 inches</li> </ul>	<ul style="list-style-type: none"> <li>• 2-12 inches</li> </ul>	<ul style="list-style-type: none"> <li>• Top</li> <li>• Bottom</li> </ul> <p>can be switched in field</p>	<ul style="list-style-type: none"> <li>• Eye bolt</li> <li>• Swivel/ Stationary</li> <li>• SAA pattern</li> </ul>

See reverse side for more information

Notice: The information contained herein is, to the best of our knowledge, true, accurate and reliable. Since procedures and conditions under which these products may be used are beyond our control, no warranty, expressed or implied, is made to their performance.



Syndevco Inc.  
ISO 9001:2015  
Certificate #  
10002227 QM15

## Syndevco Inc.

Sheet: 141114

24205 Telegraph Rd - Southfield MI 48033

Toll Free: (800) 356-2839 Local: (248) 356-2839 Fax: (248) 356-0928

visit us at: [www.syndevco.com](http://www.syndevco.com)



# SM Series Saddle Assembly

## MOUNTING OPTIONS

### Along Radius

Swivel/ Stationary



SAA Hole Pattern

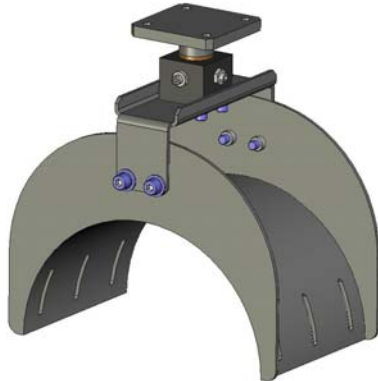


### Top Mount

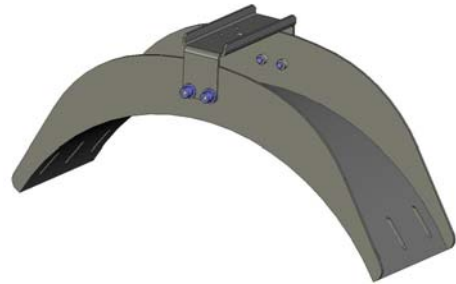
Eye Bolt



Swivel/ Stationary



UHC Hole Pattern

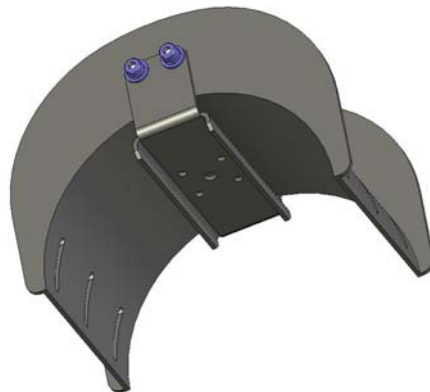


### Bottom Mount

Swivel/ Stationary



UHC Hole Pattern



Notice: The information contained herein is, to the best of our knowledge, true, accurate and reliable. Since procedures and conditions under which these products may be used are beyond our control, no warranty, expressed or implied, is made to their performance.



Syndevco Inc.  
ISO 9001:2015  
Certificate #  
10002227 QM15

## Syndevco Inc.

24205 Telegraph Rd - Southfield MI 48033

Toll Free: (800) 356-2839 Local: (248) 356-2839 Fax: (248) 356-0928

visit us at: [www.syndevco.com](http://www.syndevco.com)