



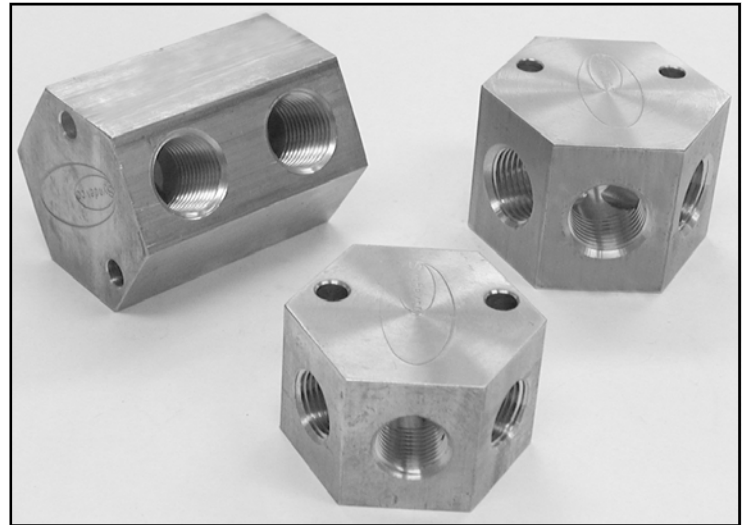
Wye Series Manifolds

(248) 356-2839

Brass compact wye manifolds with two or three secondary ports

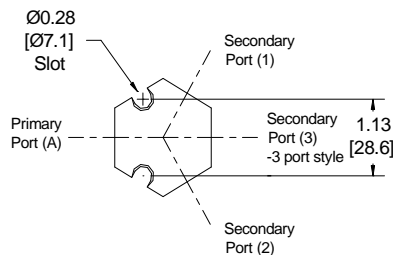
FEATURES

- Compact size
- Easily mounts with 1/4 or M6 bolts
- Brass construction
- Thread types available
 - NPT—Standard
 - BSPT
 - BSPP (G port)
- Excellent to supply weld tips in parallel
- 1/8 to 1 inch port sizes available
- Two or three secondary ports available
- Dressout assistance readily available

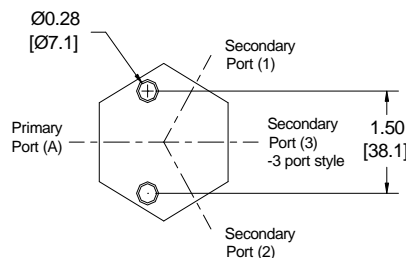


DIMENSIONS

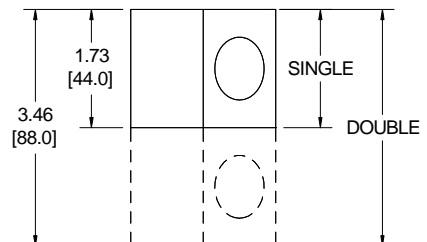
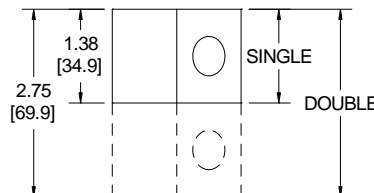
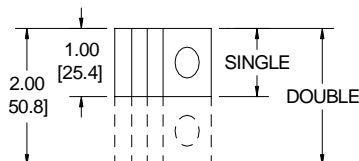
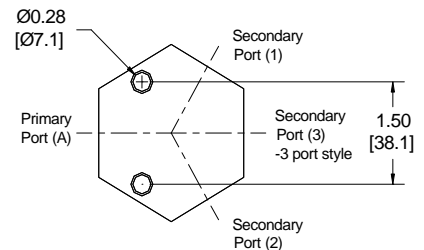
Size A



Size B



Size C



Units of Measure: inches [mm]

Notice: The information contained herein is, to the best of our knowledge, true, accurate and reliable. Since procedures and conditions under which these products may be used are beyond our control, no warranty, expressed or implied, is made to their performance.



Syndevco Inc. Sheet: 141114
 24205 Telegraph Rd - Southfield MI 48033
 Toll Free: (800) 356-2839 Local: (248) 356-2839 Fax: (248) 356-0928
 visit us at: www.syndevco.com



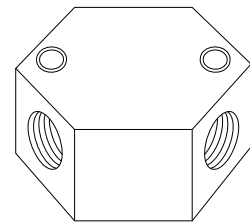
Wye Series Manifolds

PART NUMBER SYSTEM - 2 PORT

GENERIC PART NUMBER: AABBB/C-D
 SAMPLE PART NUMBER: 38382/2

| Size | AA Primary Port Size | | BBB Secondary Port Size | | C Single or Double Stack | | D Additional Options | |
|------|-------------------------|---------|----------------------------|--------------------|-----------------------------|--------|-------------------------|---|
| | A | 12 | 1/8 NPT | 122 | 1/8 NPT | None | Single | 1 |
| A | 25 | 1/4 NPT | 122 252 | 1/8 NPT 1/4 NPT | | | | |
| A | 38 | 3/8 NPT | 122 | 1/8 NPT | 2 | Double | | |
| | | | 252 | 1/4 NPT | | | | |
| | | | 382 | 3/8 NPT | | | | |
| B | 50 | 1/2 NPT | 122 | 1/8 NPT | | | | |
| | | | 252 | 1/4 NPT | | | | |
| | | | 382 | 3/8 NPT | | | | |
| | | | 502 | 1/2 NPT | | | | |
| B | 75 | 3/4 NPT | 122 | 1/8 NPT | | | | |
| | | | 252 | 1/4 NPT | | | | |
| | | | 382 | 3/8 NPT | | | | |
| | | | 502 | 1/2 NPT | | | | |
| C | 75 | 3/4 NPT | 752 | 3/4 NPT | | | | |

2 PORT
(View of secondary ports)

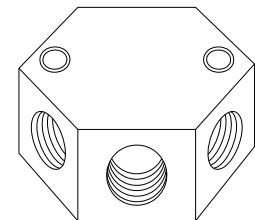


PART NUMBER SYSTEM - 3 PORT

GENERIC PART NUMBER: AABBB/C-D
 SAMPLE PART NUMBER: 38383/2

| Size | AA Primary Port Size | | BBB Secondary Port Size | | C Single or Double Stack | | D Additional Options | |
|------|-------------------------|---------|----------------------------|--------------------|-----------------------------|--------|-------------------------|--|
| | A | 12 | 1/8 NPT | 123 | 1/8 NPT | None | Single | 1 |
| A | 25 | 1/4 NPT | 123 253 | 1/8 NPT 1/4 NPT | | | | |
| A | 38 | 3/8 NPT | 123 | 1/8 NPT | 2 | Double | | Leave blank for none or call a Syndevco Representative |
| | | | 253 | 1/4 NPT | | | | |
| B | 38 | 3/8 NPT | 383 | 3/8 NPT | | | | |
| B | 50 | 1/2 NPT | 123 | 1/8 NPT | | | | |
| | | | 253 | 1/4 NPT | | | | |
| | | | 383 | 3/8 NPT | | | | |
| C | 50 | 1/2 NPT | 503 | 1/2 NPT | | | | |
| B | 75 | 3/4 NPT | 123 | 1/8 NPT | | | | |
| | | | 253 | 1/4 NPT | | | | |
| | | | 383 | 3/8 NPT | | | | |
| C | 75 | 3/4 NPT | 503 | 1/2 NPT | | | | |

3 PORT
(View of secondary ports)



Notice: The information contained herein is, to the best of our knowledge, true, accurate and reliable. Since procedures and conditions under which these products may be used are beyond our control, no warranty, expressed or implied, is made to their performance.



Syndevco Inc.
 ISO 9001:2015
 Certificate # 10002227-QM15

Syndevco Inc.

24205 Telegraph Rd - Southfield MI 48033

Toll Free: (800) 356-2839 Local: (248) 356-2839 Fax: (248) 356-0928

visit us at: www.syndevco.com