



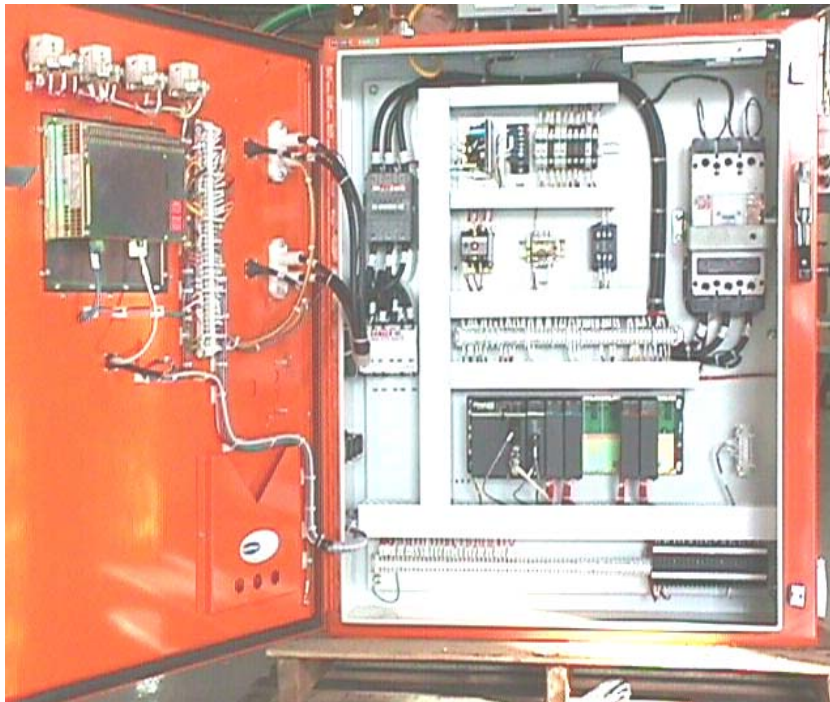
# Control Panels & Junction Assemblies

(248) 356-2839

*U/L and CU/L approved for Control Panels. Value-added junction assemblies*

## FEATURES

- U/L and CU/L approved for panel build
- Only panels required to have U/L and CU/L approvals will receive sticker
- Over 50 years of manufacturing experience
- Strict quality standards that ensure accurate build
- Hybrid panel build with electrical, pneumatic, hydraulic, paint, etc.
- Customization/ rework of existing panels available
- Most end user specifications known
- Field integration available



Notice: The information contained herein is, to the best of our knowledge, true, accurate and reliable. Since procedures and conditions under which these products may be used are beyond our control, no warranty, expressed or implied, is made to their performance.



Syndevco Inc.  
ISO 9001:2015  
Certificate #  
1000227 QM15

**Syndevco Inc.**

Sheet: 141114

24205 Telegraph Rd - Southfield MI 48033

Toll Free: (800) 356-2839 Local: (248) 356-2839 Fax: (248) 356-0928

visit us at: [www.syndevco.com](http://www.syndevco.com)



Intentionally  
left  
blank