



# Clamp Inserts - Urethane

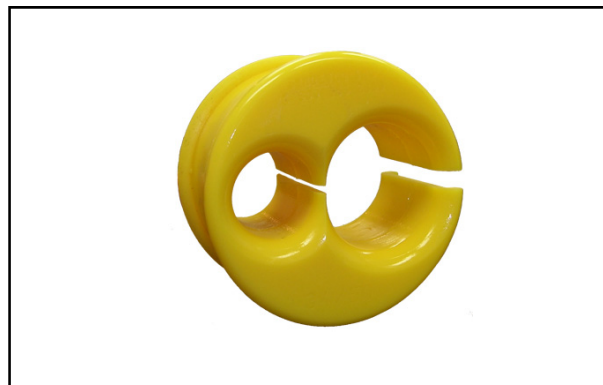
For use without Corrugated Tubing

(248) 356-2839

*Inserts used in conjunction with SH, TH, UH, and LH Series Clamps, are pliable to further protect utilities*

## Features

- Use with Utility Clamps— **SH**, **TH**, **UH** and **LH**
- 1 pc— Slotted pliable design
- Many configurations available
- Custom designs available
- Robot Dress assistance available
- 'Value added' services available



## Single and Multi-hole Configurations



Blank Insert  
Shown

### SH Series Inserts

#### Single Hole

xx = diameter in mm

Example:  
**SHI-B25**

*Blank Insert: SHI-B00-1*

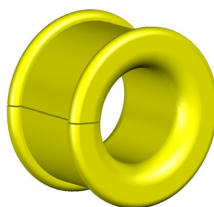
#### Dual Hole

xx = diameter in mm

yy = diameter in mm

- Smallest hole diameter listed first

Example:  
**SHI-B10/13**



### TH Series Inserts

#### Single Hole

xx = diameter in mm

Example:  
**THI-B35**

*Blank Insert: THI-B00-1*

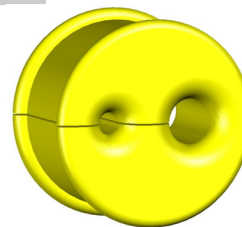
#### Dual Hole

xx = diameter in mm

yy = diameter in mm

- Smallest hole diameter listed first

Example:  
**THI-B18/25**



Single-Hole  
Insert Shown

### UH Series Inserts

#### Single Hole

xx = diameter in mm

Example:  
**UHI-B45**

*Blank Insert: UHI-B00-1*

#### Dual Hole

xx = diameter in mm

yy = diameter in mm

- Small hole diameter listed first

Example:  
**UHI-B34/36**

Dual-Hole  
Insert Shown

### LH Series Inserts

#### Single Hole

xx = diameter in mm

Example:  
**LHI-B100**

*Blank Insert: LHI-B00-1*

#### Dual Hole

xx = diameter in mm

yy = diameter in mm

- Small hole diameter listed first

Example:  
**LHI-B34/60**

Inserts can be configured to have more than two holes. We can custom design a hole pattern to fit your needs

Notice: The information contained herein is, to the best of our knowledge, true, accurate and reliable. Since procedures and conditions under which these products may be used are beyond our control, no warranty, expressed or implied, is made to their performance.



Syndevco Inc.  
ISO 9001:2015  
Certificate #  
1000227 QM15

**Syndevco Inc.**

Sheet: 141114

24205 Telegraph Rd - Southfield MI 48033

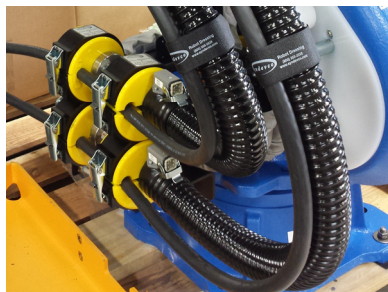
Toll Free: (800) 356-2839 Local: (248) 356-2839 Fax: (248) 356-0928

visit us at: [www.syndevco.com](http://www.syndevco.com)



# Clamp Inserts - Urethane

For use without Corrugated Tubing



Notice: The information contained herein is, to the best of our knowledge, true, accurate and reliable. Since procedures and conditions under which these products may be used are beyond our control, no warranty, expressed or implied, is made to their performance.



**Syndevco Inc.**

24205 Telegraph Rd - Southfield MI 48033

Toll Free: (800) 356-2839 Local: (248) 356-2839 Fax: (248) 356-0928

visit us at: [www.syndevco.com](http://www.syndevco.com)