



Gimbal Assembly

(248) 356-2839

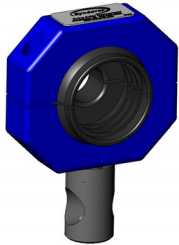
Gimbals used in conjunction with SH, TH and UH Series Clamps offer strain relief for corrugated tubing

Features

- Use with Utility Clamps – **SH**, **TH**, and **UH Series**
- Color– Black
- Provides additional strain relief for corrugated tubing at joint 6 connection point
- Approximately 20° orbital pivot capability
- Allows corrugated tube 360° of rotation
- Reduces torsional stress
- Many configurations available
- Custom requirements easily met
- Robot Dress assistance readily available
- ‘Value added’ services available



SH Series Gimbal Assembly

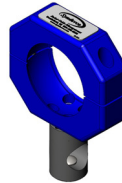


Corrugated Tube Sizes:

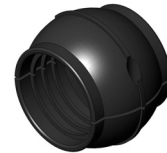
- 36 mm, 29 mm

SH Gimbal Assembly
SHG-C (tube size)- ID mm
Example:
SHG-C36-30-B0P
SHG-C29-20-B0P

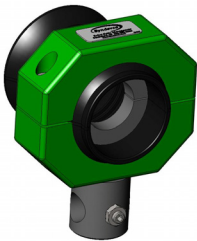
Gimbal Clamp only
SHG-B0P-A (Post Mount)



Gimbal Ball
SHG-C36-30
SHG-C29-20



TH Series Gimbal Assembly

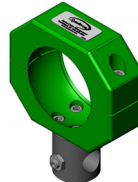


Corrugated Tube Sizes:

- 48 mm

TH Gimbal Assembly
THG-C (tube size)- ID mm
Example:
THG-C48-40-B0P

Gimbal Clamp only
THG-B0P-A (Post Mount)



Gimbal Ball (Trumpet)
THG-C48-BALL

Gimbal Grommet
TGI-C48-ID mm
Example:
TGI-C48-40



UH Series Gimbal Assembly



Corrugated Tube Size:

- 70 mm, 56 mm

UH Gimbal Assembly
UHG-C (tube size)- ID mm
Example:
UHG-C70-50
(Includes 50mm diameter grommet)

Gimbal Receiver
UHG-C70-REC

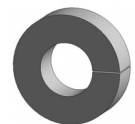


Gimbal Ball (Trumpet)
UHG-C70-BALL



Gimbal Grommet only
xx = diameter in mm

Example:
UGI-C70-50



Notice: The information contained herein is, to the best of our knowledge, true, accurate and reliable. Since procedures and conditions under which these products may be used are beyond our control, no warranty, expressed or implied, is made to their performance.



Syndevco Inc.

Sheet: 141114

24205 Telegraph Rd - Southfield MI 48033

Toll Free: (800) 356-2839 Local: (248) 356-2839 Fax: (248) 356-0928

visit us at: www.syndevco.com



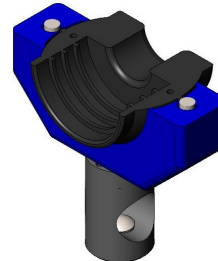
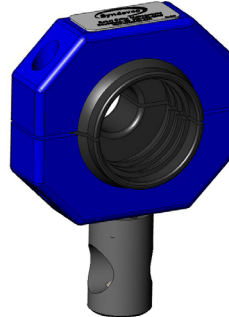
Gimbal Assembly

Gimbal Assembly Configurations

SH Series Gimbal

SHG-C36-30-B0P shown

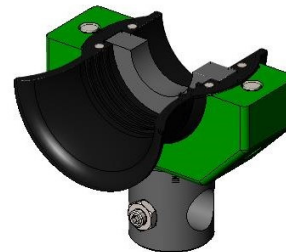
1pc SHG-B0P
1pc SHG-C36-30



TH Series Gimbal

THG-C48-40-B0P shown

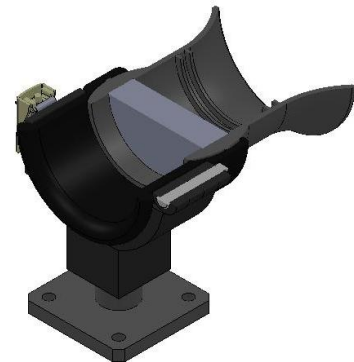
1pc THG-B0P
1pc THG-C48-40



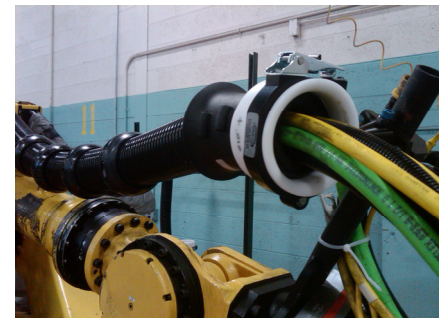
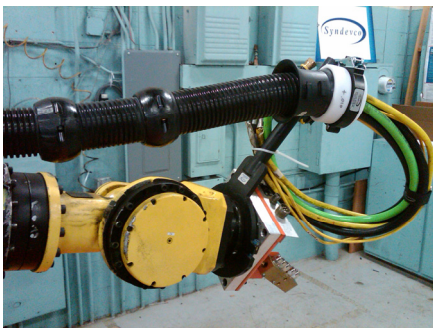
UH Series Gimbal

UHG-C70-50 shown

with 1pc
UHC-AF-SB-F0-057
Clamp Assembly
(2" wide clamp)
Clamp sold separately



UH Series Gimbal Examples



Notice: The information contained herein is, to the best of our knowledge, true, accurate and reliable. Since procedures and conditions under which these products may be used are beyond our control, no warranty, expressed or implied, is made to their performance.



Syndevco Inc.
ISO 9001:2015
Certificate #
10002227 QM15

Syndevco Inc.

24205 Telegraph Rd - Southfield MI 48033

Toll Free: (800) 356-2839 Local: (248) 356-2839 Fax: (248) 356-0928

visit us at: www.syndevco.com