



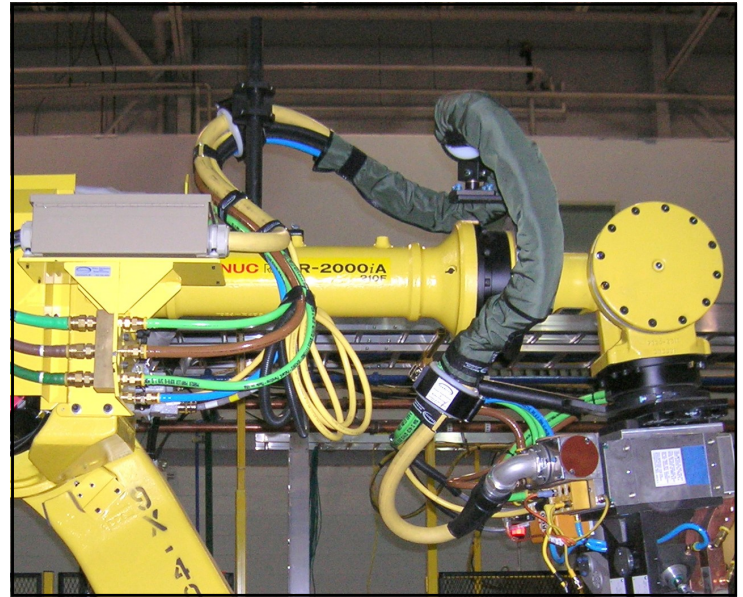
WS Series Wear Sleeves

(248) 356-2839

Protect utilities for long wear and low downtime. Cut, tear, and abrasion resistant removable wear sleeves.

Features

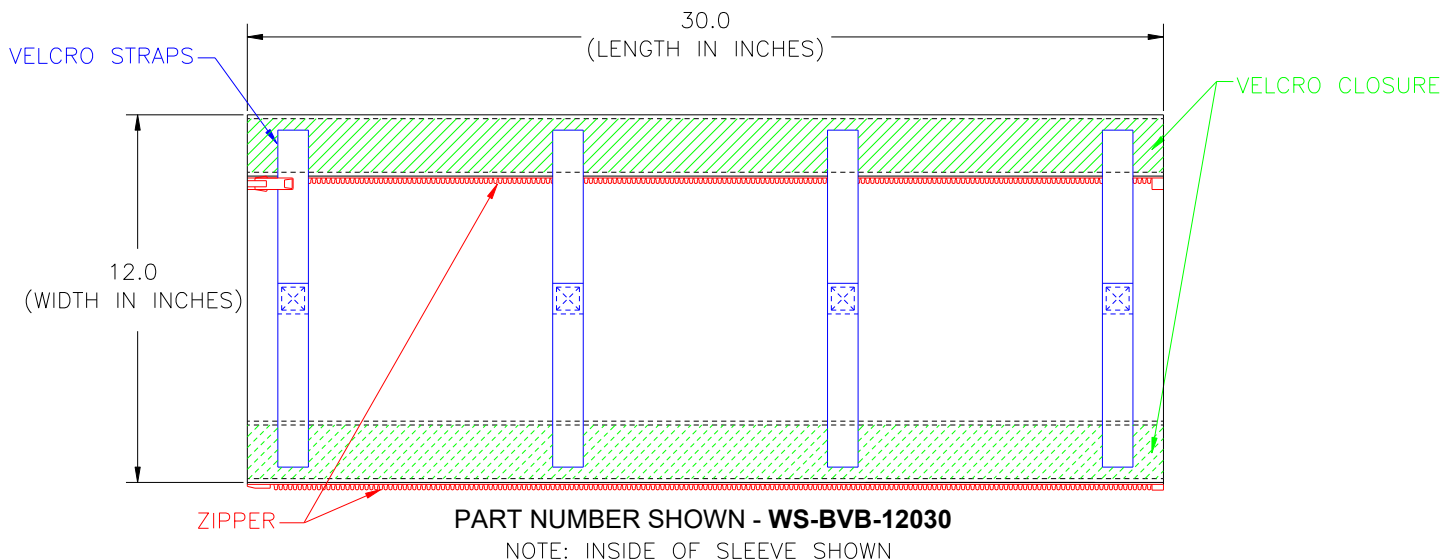
- Cut Resistant
- Tear Resistant
- Abrasion Resistant
- Velcro straps (standard) inside to assist in positioning
- Zipper (standard) outside to hold the sleeve closed during use
- Velcro flap to protect zipper during use
- Standard sleeve protects up to a 3 inch (76mm) diameter bundle
- Customizing readily available
- Robot Dress assistance readily available
- 'Value added' services available



Usages and Dimensions

Uses Include:

- Robot Dress utility protection
- Robot Dress utility containment
- Maintenance hose/ cable protection
- Weld flash guard
- Adds a clean appearance to bundles



Notice: The information contained herein is, to the best of our knowledge, true, accurate and reliable. Since procedures and conditions under which these products may be used are beyond our control, no warranty, expressed or implied, is made to their performance.



Syndevco Inc.

Sheet: 141114

24205 Telegraph Rd - Southfield MI 48033

Toll Free: (800) 356-2839 Local: (248) 356-2839 Fax: (248) 356-0928

visit us at: www.syndevco.com



WS Series Wear Sleeves

Part Numbering

GENERIC PART NUMBER: WS-UWW-XXYYY-Z

SAMPLE PART NUMBER: WS-BVB-12030

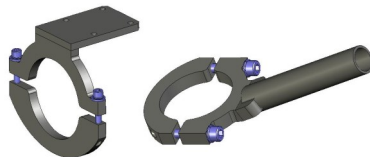
WS-

U		V		W		XX	
Material		Internal Straps		Closure		Width (inches)	
B	Denier Black (standard)	V	Velcro - no buckle (standard)	B	Velcro and Zipper (standard)	12	12 inches (standard)
K	Kevlar	0	No Straps	Z	Zipper Only	See a Syndevco representative for additional options	
				V	Velcro Only		

Please see our other products for
further design solutions



Corrugated Tube &
Wear Bands



Cylinder Brackets



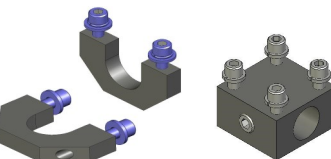
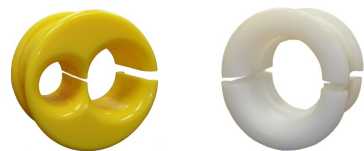
Velcro Straps



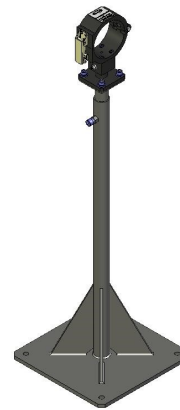
Clamps & Inserts



Post Brackets



Transition Brackets



Stand Assemblies

Notice: The information contained herein is, to the best of our knowledge, true, accurate and reliable. Since procedures and conditions under which these products may be used are beyond our control, no warranty, expressed or implied, is made to their performance.



Syndevco Inc.

24205 Telegraph Rd - Southfield MI 48033

Toll Free: (800) 356-2839 Local: (248) 356-2839 Fax: (248) 356-0928

visit us at: www.syndevco.com