



Clamp Inserts - Urethane

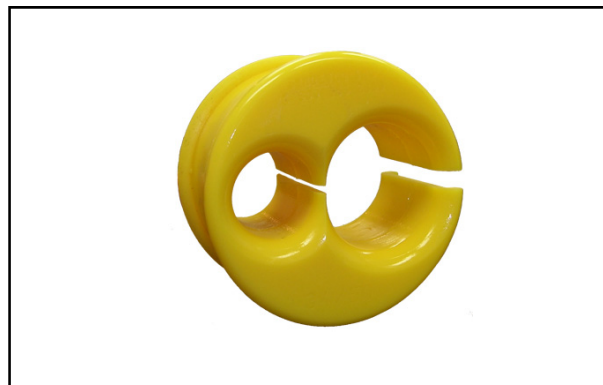
For use without Corrugated Tubing

(248) 356-2839

Inserts used in conjunction with SH, TH, UH, and LH Series Clamps, are pliable to further protect utilities

Features

- Use with Utility Clamps— **SH**, **TH**, **UH** and **LH**
- 1 pc— Slotted pliable design
- Many configurations available
- Custom designs available
- Robot Dress assistance available
- 'Value added' services available



Single and Multi-hole Configurations



Blank Insert
Shown

SH Series Inserts

Single Hole

xx = diameter in mm

Example:
SHI-B25

Blank Insert: SHI-B00-1

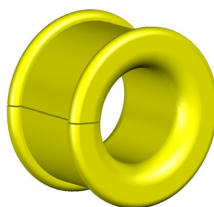
Dual Hole

xx = diameter in mm

yy = diameter in mm

- Smallest hole diameter listed first

Example:
SHI-B10/13



TH Series Inserts

Single Hole

xx = diameter in mm

Example:
THI-B35

Blank Insert: THI-B00-1

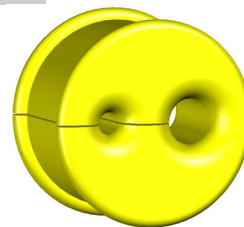
Dual Hole

xx = diameter in mm

yy = diameter in mm

- Smallest hole diameter listed first

Example:
THI-B18/25



Single-Hole
Insert Shown

UH Series Inserts

Single Hole

xx = diameter in mm

Example:
UHI-B45

Blank Insert: UHI-B00-1

Dual Hole

xx = diameter in mm

yy = diameter in mm

- Small hole diameter listed first

Example:
UHI-B34/36

Dual-Hole
Insert Shown

LH Series Inserts

Single Hole

xx = diameter in mm

Example:
LHI-B100

Blank Insert: LHI-B00-1

Dual Hole

xx = diameter in mm

yy = diameter in mm

- Small hole diameter listed first

Example:
LHI-B34/60

Inserts can be configured to have more than two holes. We can custom design a hole pattern to fit your needs

Notice: The information contained herein is, to the best of our knowledge, true, accurate and reliable. Since procedures and conditions under which these products may be used are beyond our control, no warranty, expressed or implied, is made to their performance.



DQS Inc.
Syndevco Inc.
Registered to ISO 9001:2015
10002227 QM15

Syndevco Inc.

Sheet: 230818

24205 Telegraph Rd - Southfield MI 48033

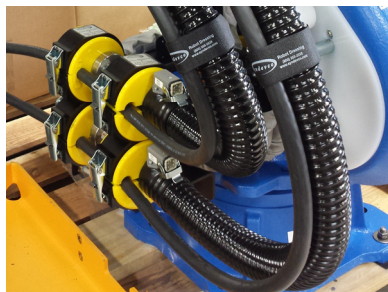
Toll Free: (800) 356-2839 Local: (248) 356-2839 Fax: (248) 356-0928

visit us at: www.syndevco.com



Clamp Inserts - Urethane

For use without Corrugated Tubing



Notice: The information contained herein is, to the best of our knowledge, true, accurate and reliable. Since procedures and conditions under which these products may be used are beyond our control, no warranty, expressed or implied, is made to their performance.



Syndevco Inc.

24205 Telegraph Rd - Southfield MI 48033

Toll Free: (800) 356-2839 Local: (248) 356-2839 Fax: (248) 356-0928

visit us at: www.syndevco.com