



# RF Series Transgun Panel Mounts

(248) 356-2839

*Industrial strength panel mounts enable quick connections to a transgun or power distribution box w/ finger tipped safety*

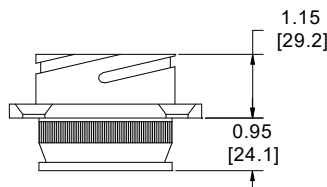
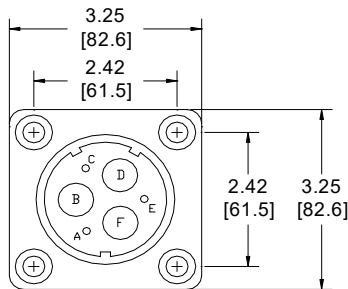
## FEATURES

- 'Finger Tipped' insulated male contacts for maximum safety (male is the line end)
- 6 AWG—1/0 AWG conductor choices
- Auxiliary conductors available for control connections
- Industrial strength connectors with multi-key connection for connection strength and stability
- Secure 120 degree turn Rapid Change connection
- Audible, tactile, and visual indication of proper connection w/ RF series transgun cables
- Crimp connections used
- Choose receptacles from RF Series Transgun Cables
- Design and dressout assistance readily available
- 'Value Added' services available— power distribution assemblies, dense packs, complete dressouts

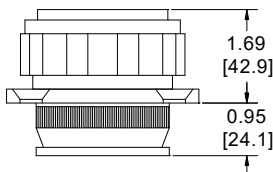
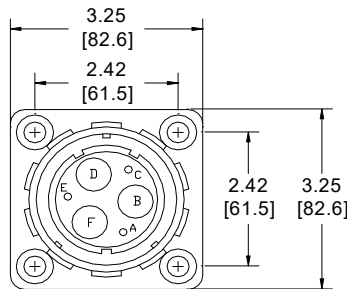


## DIMENSIONS

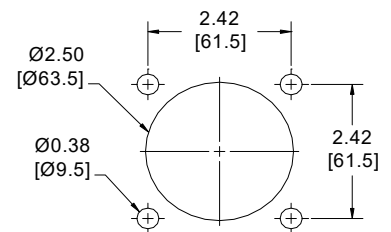
**RFF40 Female Flanged Receptacle (Load)**



**RFM30 Male Flanged Plug (Line)**



**Mounting Hole Pattern**



Units of Measure: inches [mm]

Notice: The information contained herein is, to the best of our knowledge, true, accurate and reliable. Since procedures and conditions under which these products may be used are beyond our control, no warranty, expressed or implied, is made to their performance.



**Syndevco Inc.**

Sheet: 230818

24205 Telegraph Rd - Southfield MI 48033

Toll Free: (800) 356-2839 Local: (248) 356-2839 Fax: (248) 356-0928

visit us at: [www.syndevco.com](http://www.syndevco.com)



# RF Series Transgun Panel Mounts

## PART NUMBER SYSTEM

GENERIC PART NUMBER:

RFAAA-BB-CC-D

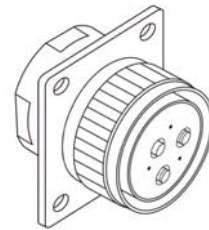
SAMPLE PART NUMBER:

RFM30- GJ-03

**RFM30 Male Flanged Plug**

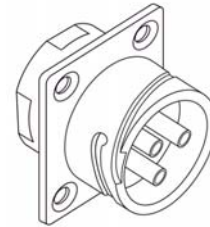
**(Line Side)**

*(Plugs have an active coupler and mate with receptacles)*



**RFF40 Female Flanged Receptacle**  
**(Load Side)**

*(Receptacles have a static coupler and mate with plugs)*



RF	AAA		BB		CC	D
	CONNECTOR STYLE		CONDUCTOR CONFIGURATION		LENGTH (FEET)	ADDITIONAL OPTIONS
	<b>M30</b>	Male Flanged Plug	<b>GE</b>	6 AWG 3c.	INSERT CABLE LENGTH IN FEET	LEAVE BLANK FOR NONE OR SEE A SYNDEVCO REP.
	<b>F40</b>	Female Flanged Receptacle	<b>GF</b>	6 AWG 3c. + 3c (control)		
	See a Syndevco Representative for further options		<b>GG</b>	4 AWG 3c.		
			<b>GH</b>	4 AWG 3c. + 3c (control)		
			<b>GJ</b>	2 AWG 3c.		
			<b>GK</b>	2 AWG 3c. + 3c (control)		
			See a Syndevco Representative for further options			

**Please see our other products for further design solutions**



**RF Series  
Transgun Cables**



**Stamped Series  
Compact Power Blocks**



**GTP Series  
Power Distribution Boxes**

Notice: The information contained herein is, to the best of our knowledge, true, accurate and reliable. Since procedures and conditions under which these products may be used are beyond our control, no warranty, expressed or implied, is made to their performance.



DQS Inc.  
Syndevco Inc.  
Registered to ISO 9001:2015  
1000227 QM15

**Syndevco Inc.**

24205 Telegraph Rd - Southfield MI 48033

Toll Free: (800) 356-2839 Local: (248) 356-2839 Fax: (248) 356-0928

visit us at: [www.syndevco.com](http://www.syndevco.com)